

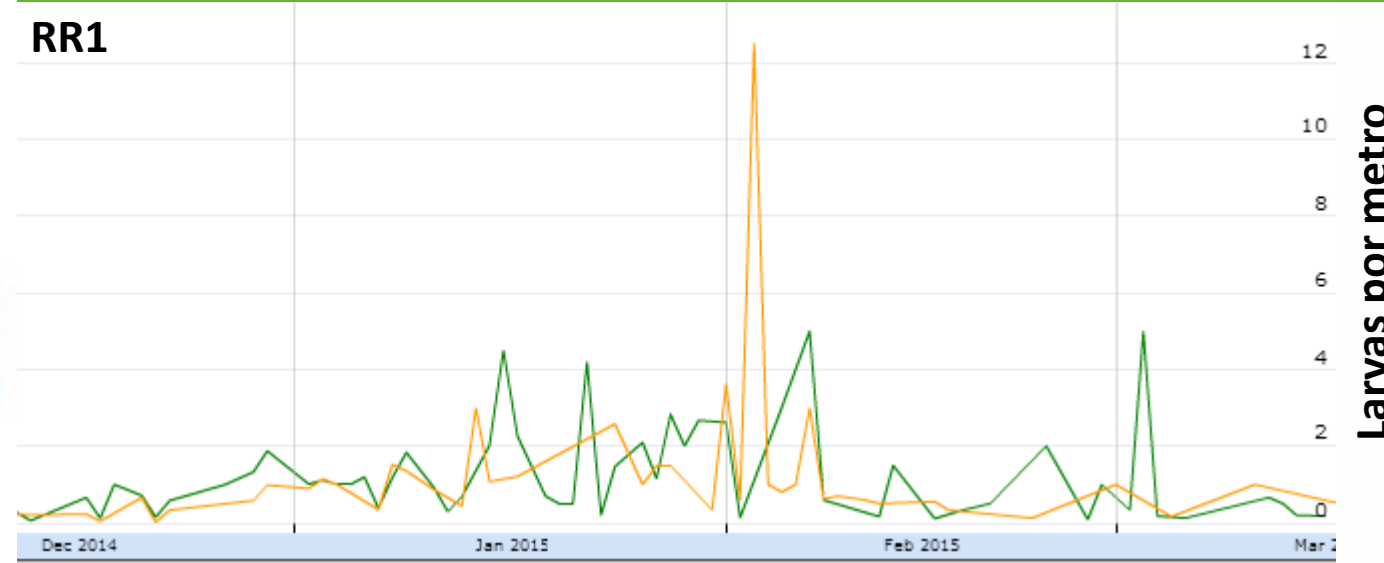
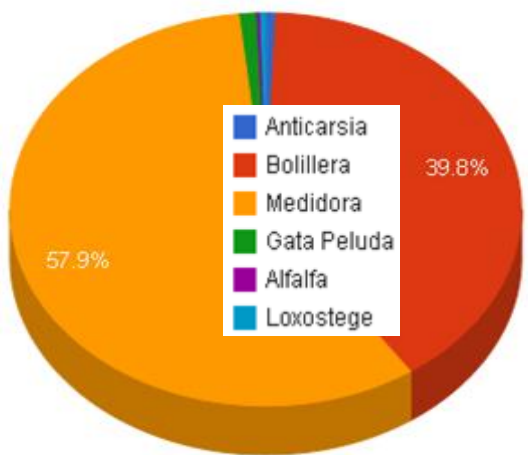
# Analisis de plagas y enfermedades en la campaña 1415

Ing. Agr. Diego Álvarez

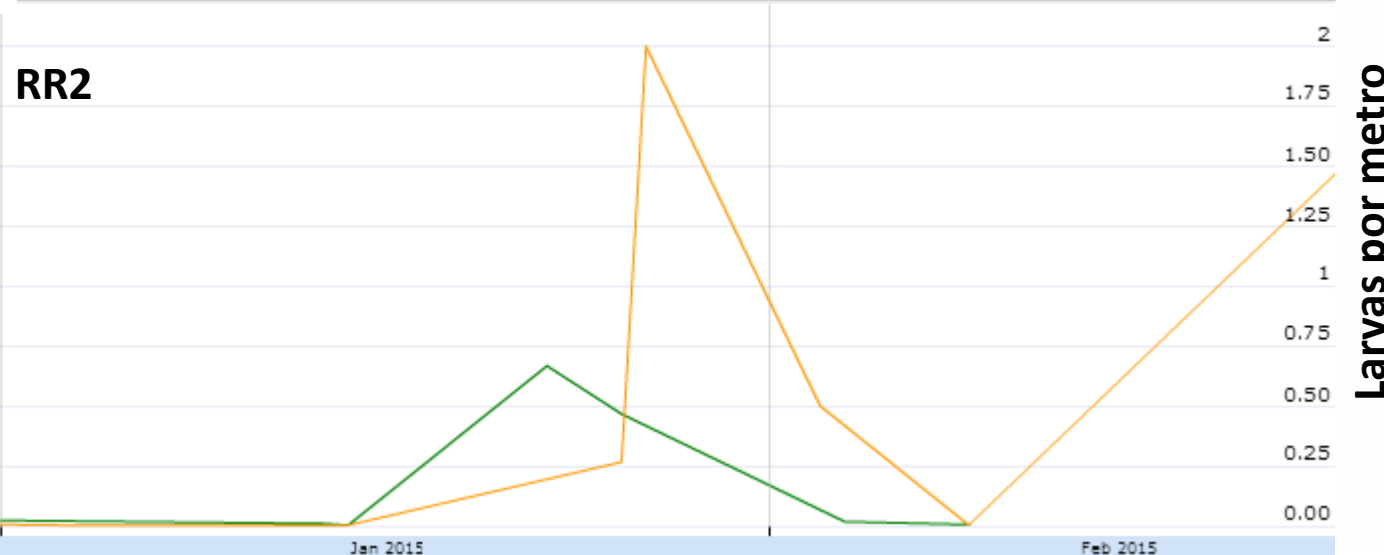
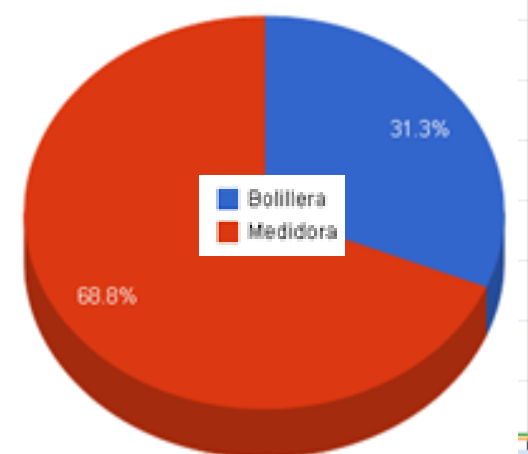
## Defoliadoras

SOJA PRIMERA

RR1



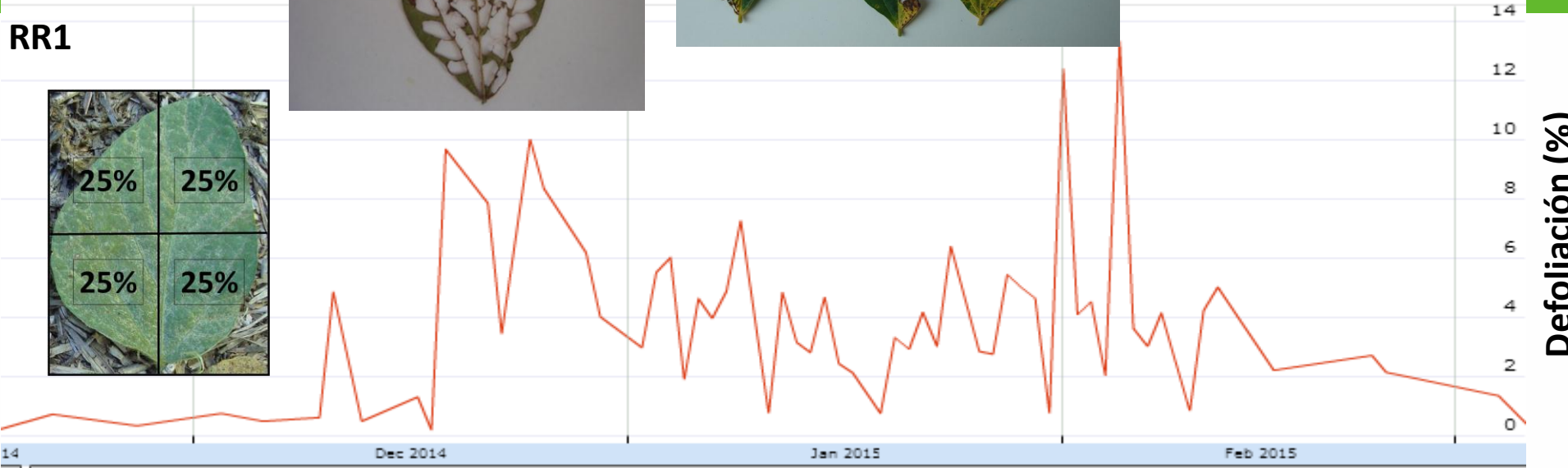
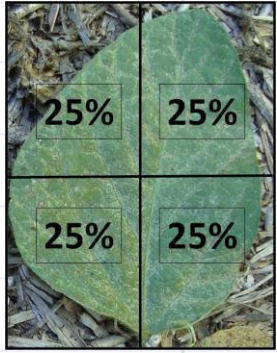
RR2



# Defoliación



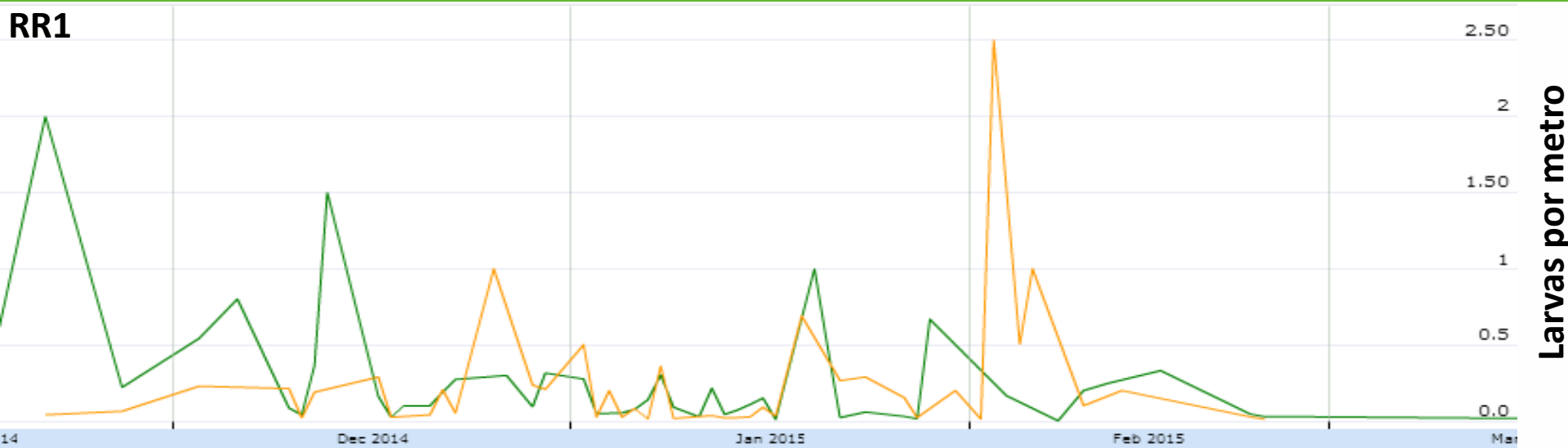
RR1



RR2



# Isoca Bolillera



Isoca Bolillera *Helicoverpa gelotopoeon*

Botecito, Thecla lepidoptero de la familia Lycaenidae



**Monitoreo, observar lo mejor posible**

# Complejo de *Spodoptera*

## RR2



*S. cosmioides*



*S. frugiperda*



*S. Eredania ?*



# *Spodoptera cosmioides*



# *Spodoptera cosmioides*



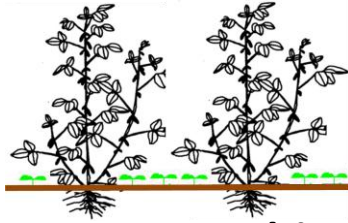


# *Spodoptera cosmioides*

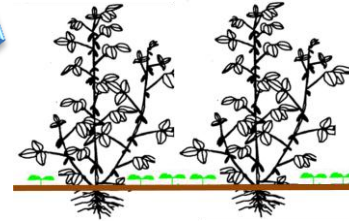




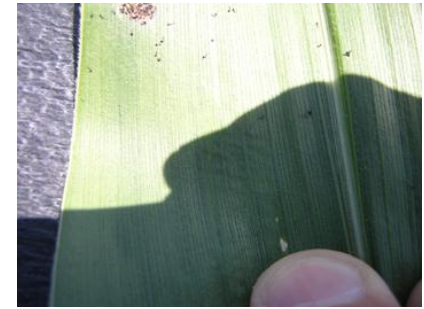
Masa de Huevos



Cultivo enmalezado



Cultivo enmalezado



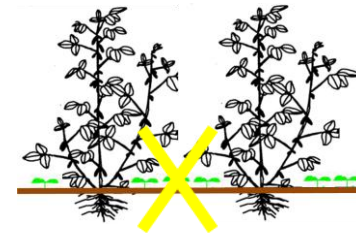
Larvas 1, 2 y 3



**Control parcial de *Spodoptera frugiperda***

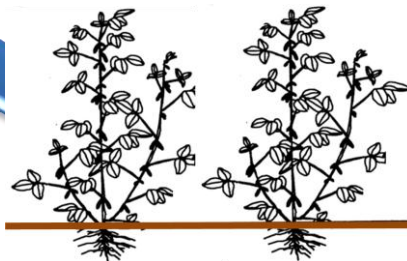


Adultos



Control de Malezas

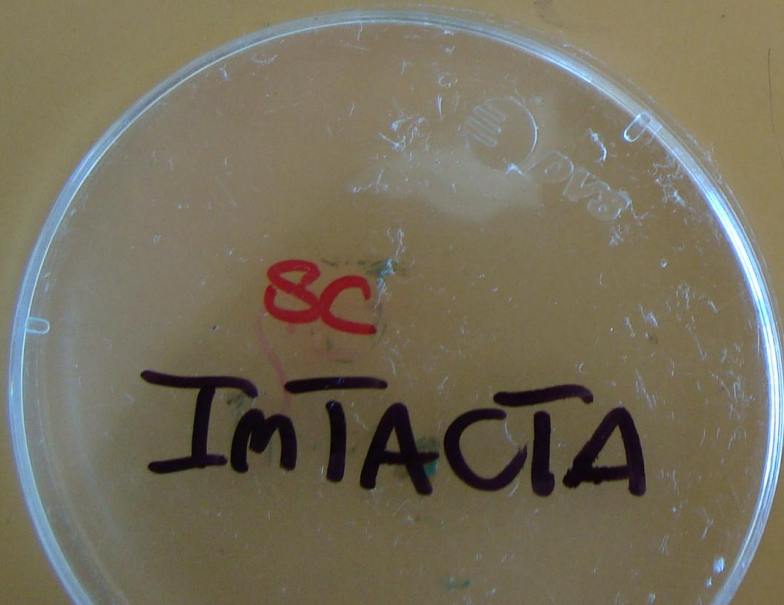
Cultivo libre de Malezas



Larvas 4 v 5



# *Spodoptera frugiperda*



# *Spodoptera frugiperda*



# Tecnología Intacta

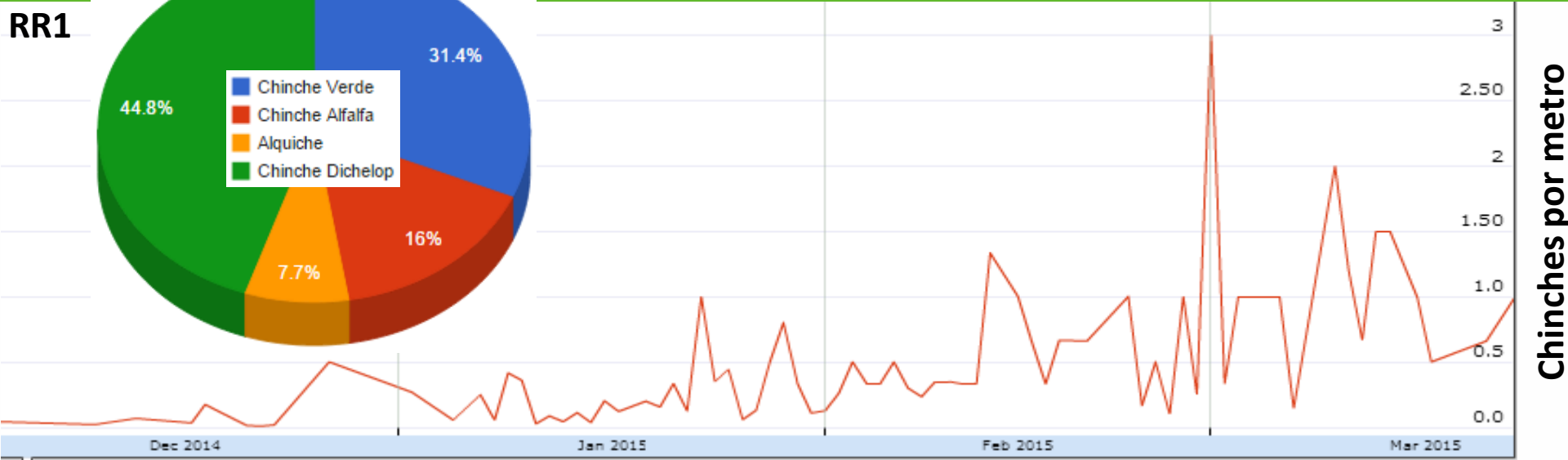
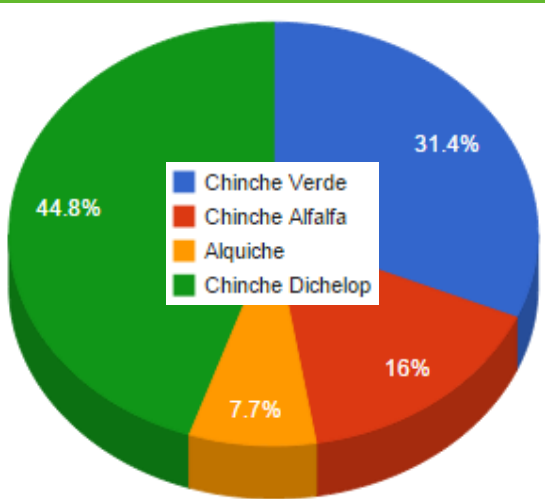


**S. Cosmioides**

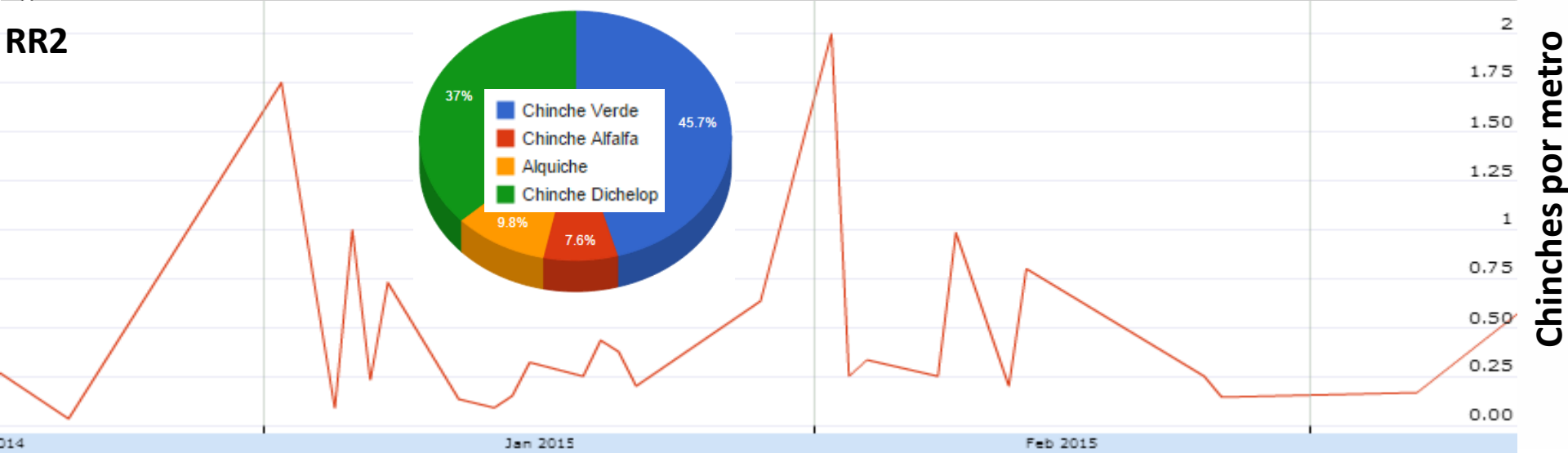
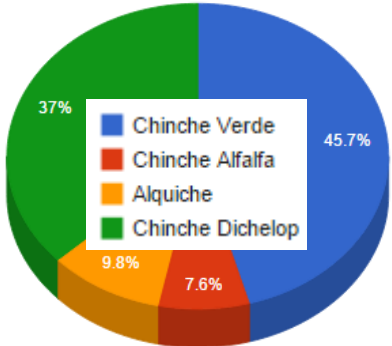


**S. Frugiperda L4 y5**

RR1

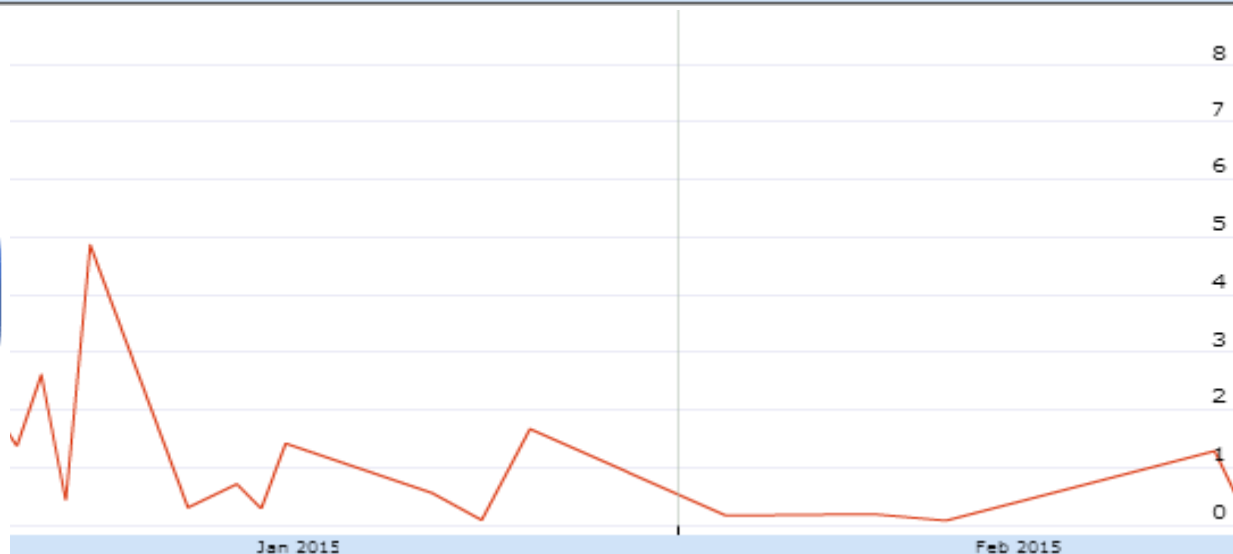
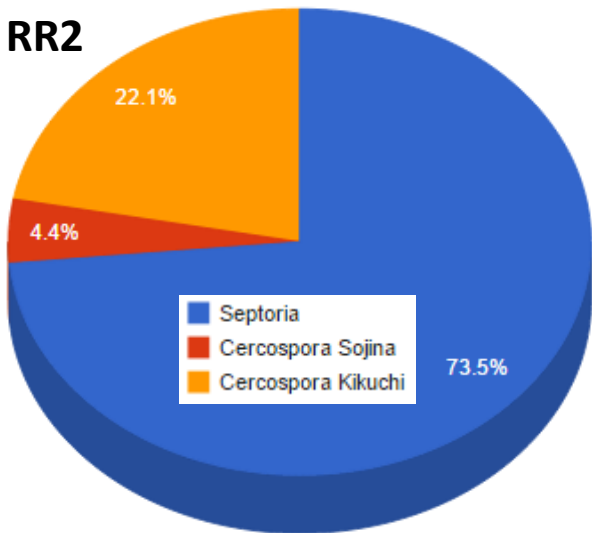
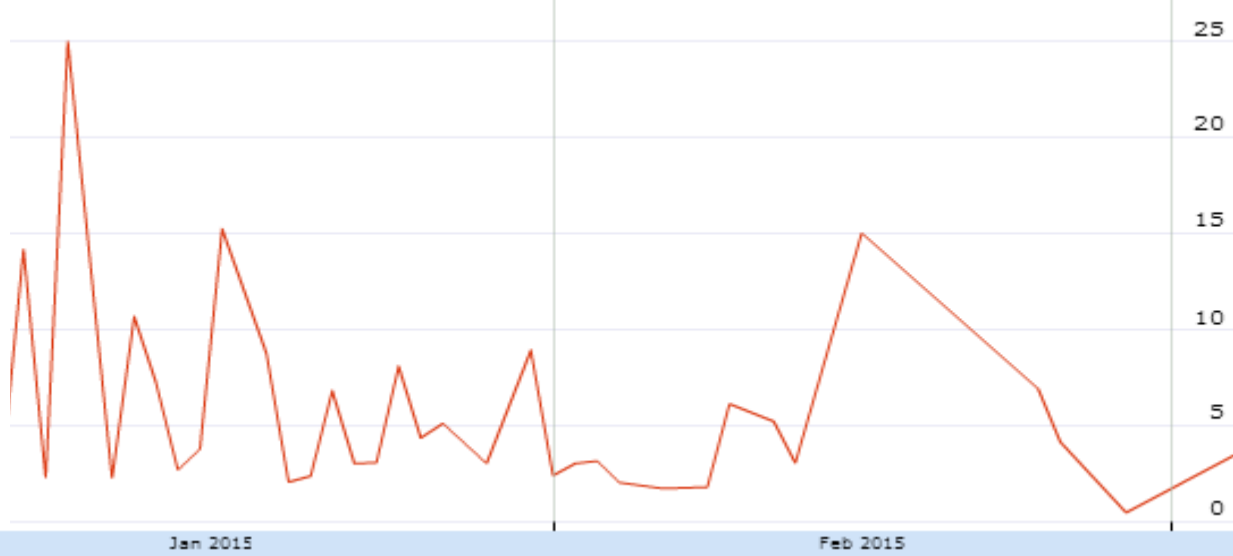
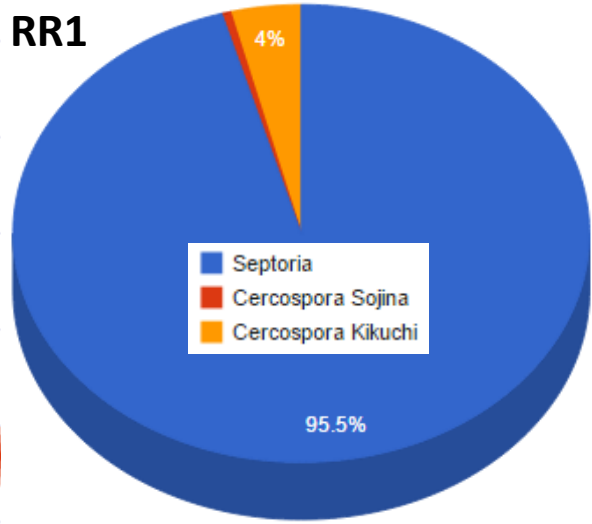


RR2

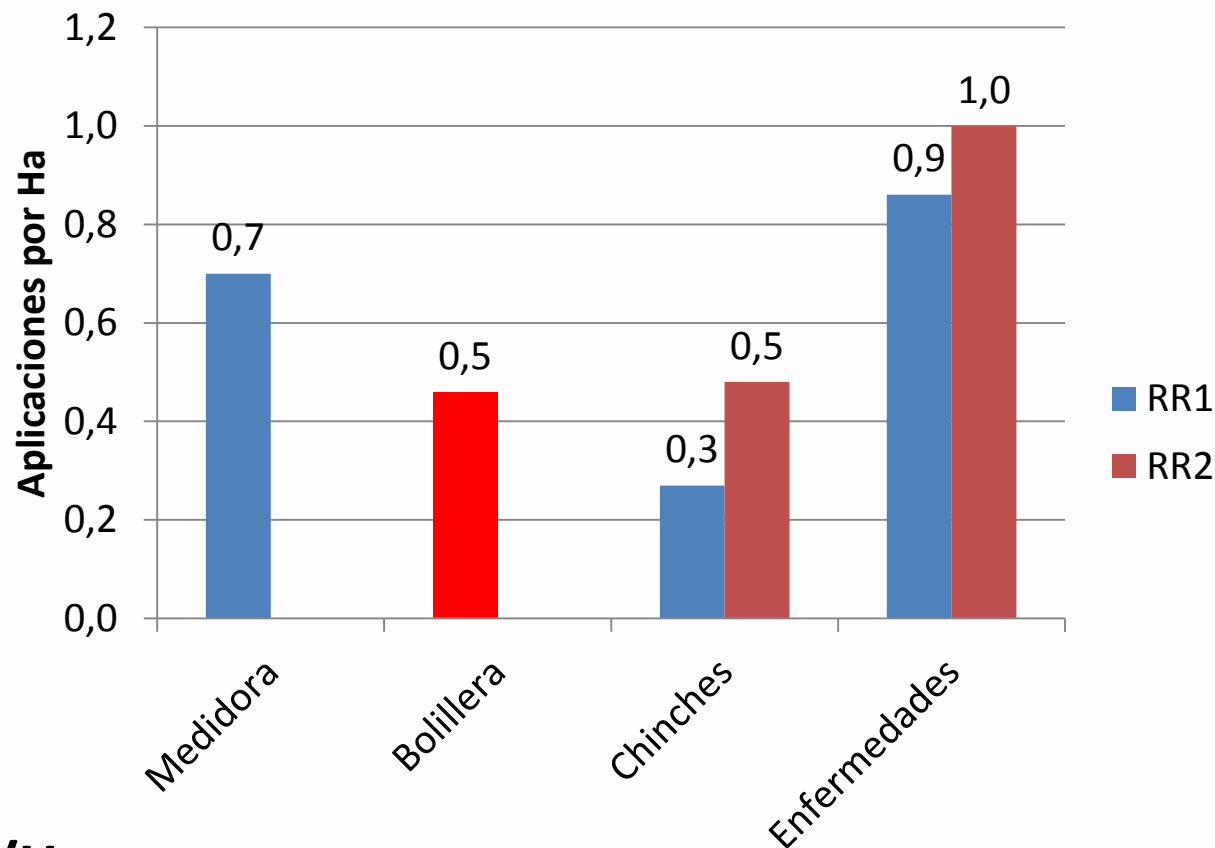


Diciembre – Enero: 700 mm  
 Febrero: 34 mm  
 Marzo: 42 mm

# Enfermedades



## Aplicaciones por Ha – Juntar Aplicaciones

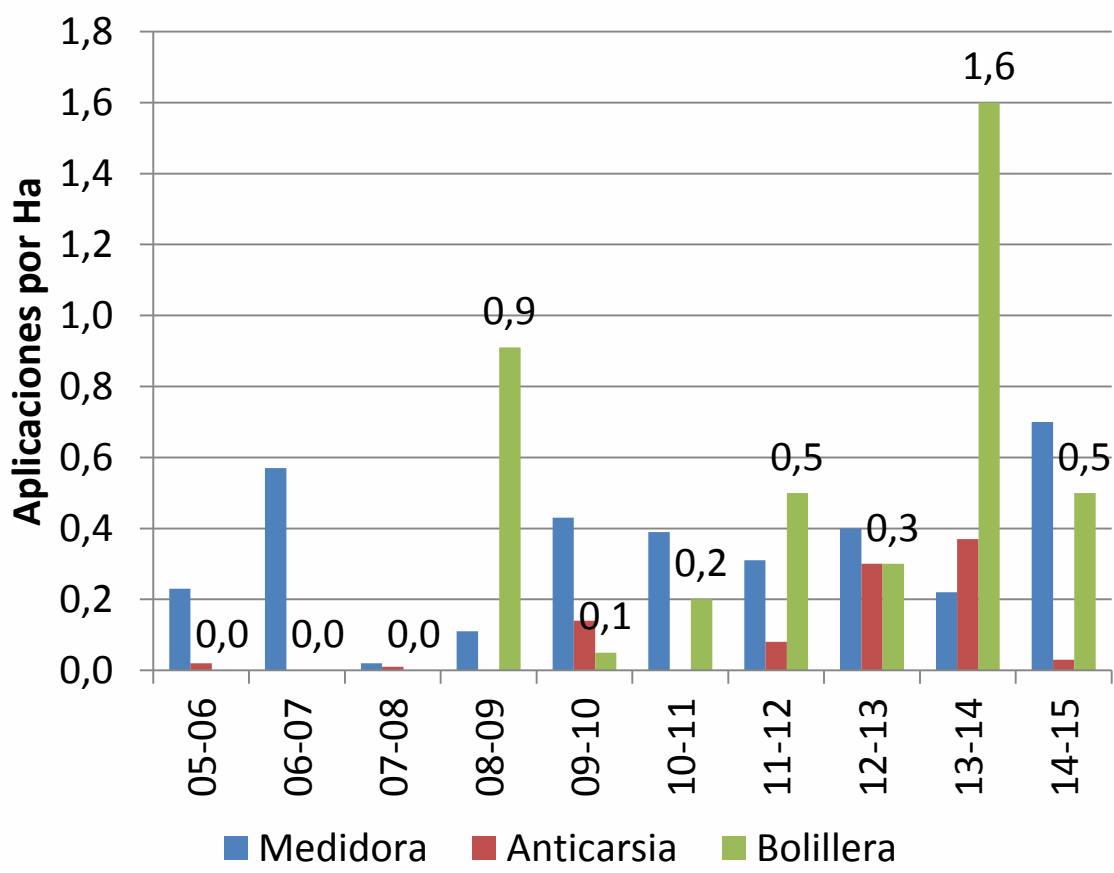


**RR1: 1,5 Apli/Ha**

**RR2:  $0,7 + 0,5 = 1,2$  Apli/Ha (0,7 Fung. en R3) y (0,5 Ins. + 0,3 Fung. en R5)**



# Conclusiones para el manejo de Manejo RR1



### Monitoreo:

- Planificación
- Capacitación
- Ejecución
- Oportunidad de labores

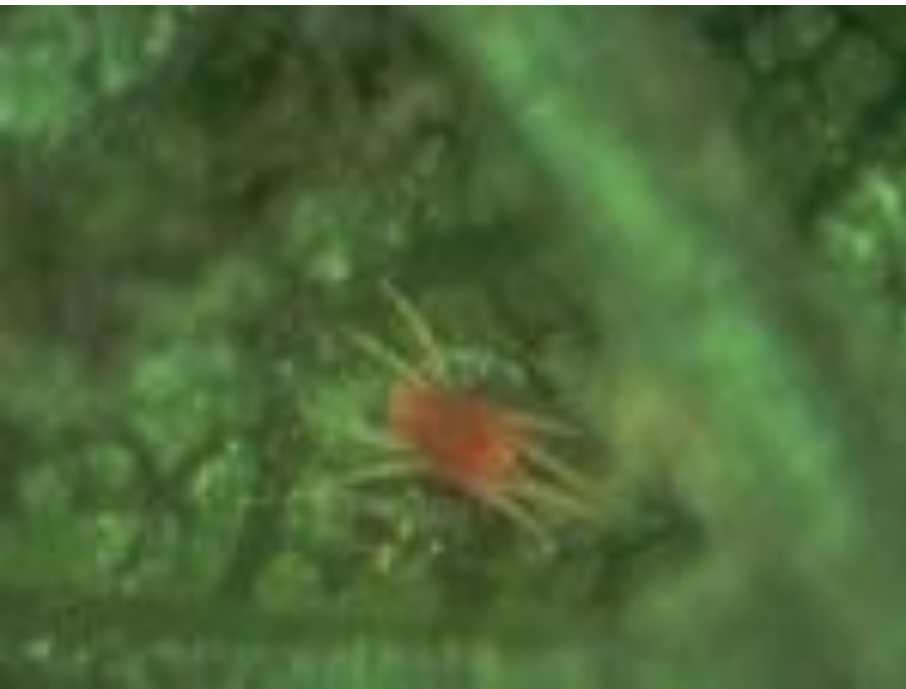
**Temperatura**  
**Precipitaciones**  
**Grupo de madurez**

### Umbrales:

- 0,5 a 1 por metro: 0,96 a 1,9 por m<sup>2</sup>
- 1 a 2 por metro: 1,9 a 3,8 por m<sup>2</sup>

# Acaros y Trios

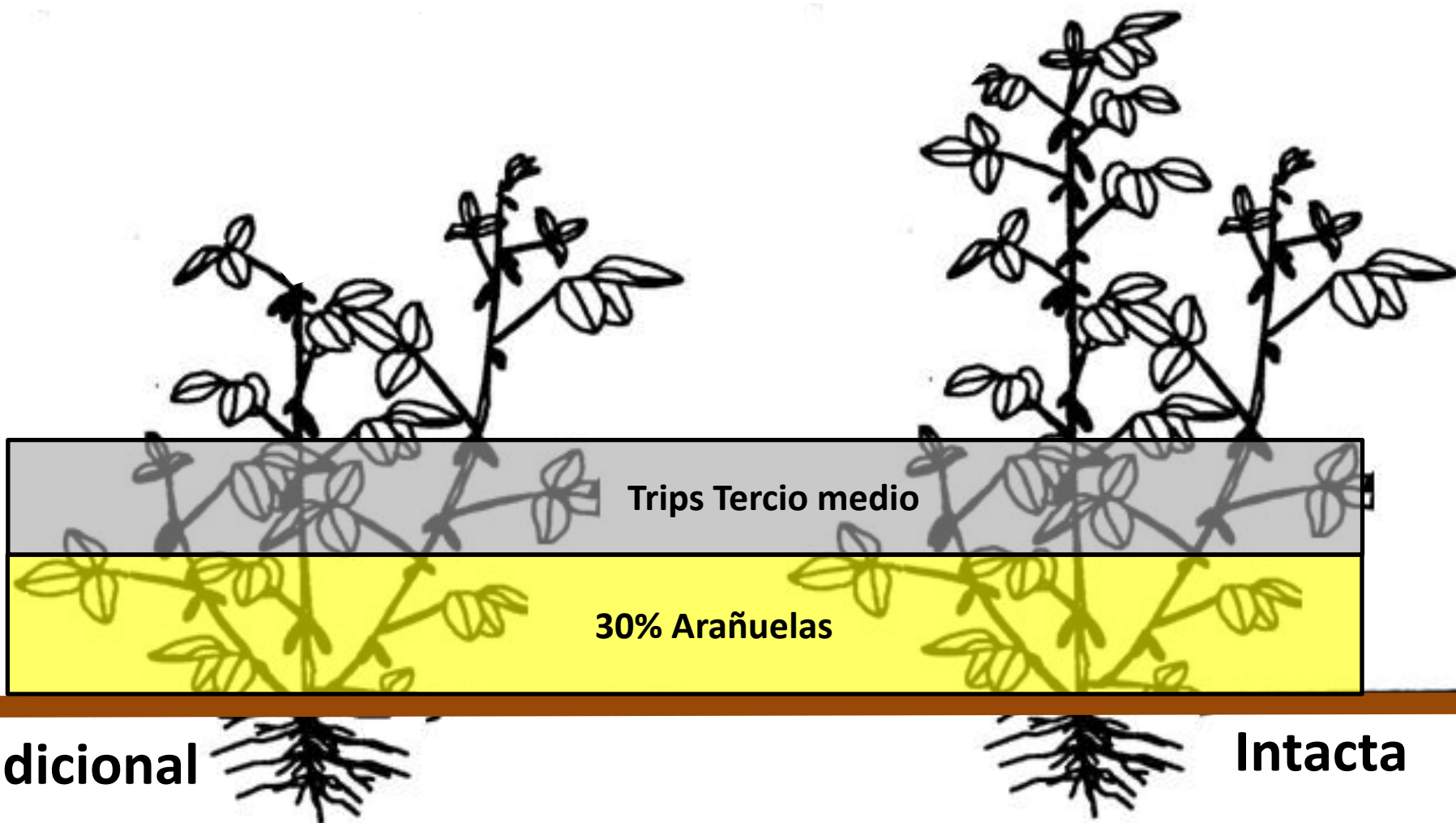
Arañuela roja común “*Tetranychus urticae*”



Trips del poroto “*Caliothrips phaseoli*”



**Interacción: Insecto**  
**Maleza**  
**Enfermedad**



## Conclusiones para el manejo Manejo RR2

# Conclusiones

## Pensando en la campaña 1516

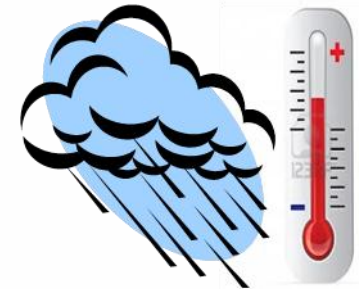
### Trampa de luz



### Situación actual de las plagas



### Ambiente



- Datos de monitoreo
- Criterios para la toma de decisión
- Elección de insecticidas
- Oportunidad de las labores

# Muchas Gracias

Ing. Agr. Diego Álvarez  
diegoalvarez@lares-srl.com